



**ECG-300G (Color Display)**  
**Digital 3-channel ECG**

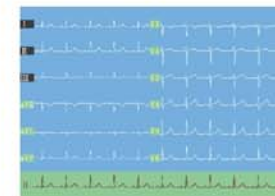
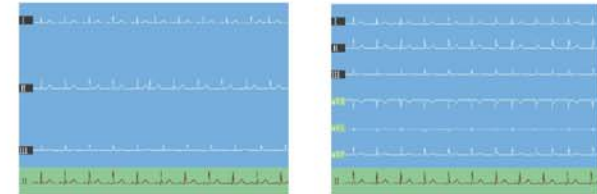
# ECG-300G (Color Display) Digital 3-channel ECG

## Specifications:

Model	ECG-300G(color display)
Acquisition Mode	12-Lead ECG simultaneous acquisition
Inputting Circuit	Floating ground inputting with anti-defibrillation protective circuit
Display	7 inches color TFT
Waveform Display	3+R, 6+R, 12+R leads
Storage	2000
Inputting information	Y
Recording Format	1, 1 + R, 3
Recording Modes	Automatic / Manual
Inputting Circuit Current	$\leq 0.1\mu\text{A}$
Inputting Impedance	$> 50\text{M}\Omega$
Patient Leakage Current	$< 10\mu\text{A}$
Time Constant	$\geq 3.2\text{s}$
Frequency Response	0.05~150Hz
Noise Level	$< 15\mu\text{V}_{\text{p-p}}$
Paper Speed	6.25, 12.5, 25, 50mm/s
Standard Sensitivity	$10 \pm 0.2 \text{ mm/mV}$
Sensitivity	2.5, 5, 10, 20mm/mV
Calibration Voltage	1mV $\pm$ 5%
Power Requirements	AC:100~240V, 50/60Hz, 40 VA DC:12V rechargeable battery
Safety Level	IEC Class I, type CF
Printer	High resolution thermal array printer
Recording Paper	63mm $\times$ 30m, roll paper
Dimension of Packing	400mm $\times$ 300mm $\times$ 200mm (L $\times$ W $\times$ H)
Weight	4.6kg

## Features:

- 7 inches 800x480 dot high brightness color TFT screen;
- 3+R, 6+R, 12+R waveforms display;
- Friendly user interface;
- High resolution and precision thermal array print;
- Histogram and trend chart for R-R interval analysis;
- RS232 interface communicate with workstation;
- Internal memory supporting ECG data and waveforms store and recall.



Inner Handhold



Standard Accessories

