



**New** **iVis 60 EXPERT**  
Affordable Shared Service Color Doppler



# Outstanding Imaging Technologies



IVIS 60 EXPERT has set a new definition for an affordable, all-digital shared service color Doppler system, by providing an 'All-in-One' solution for abdominal, OB&GYN, cardiac-vascular, small parts, pediatric and musculoskeletal applications.

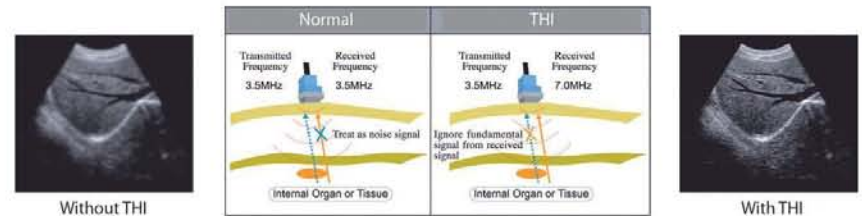
The innovative architecture of 1024 processing channels, matched with wide band probes, provides THI, compound imaging and ensures stunning image quality without compromising the frame rate.

The system supports CFM, PW, CW, Directional Power, Color-M, Panoramic, 3D, ECG, DICOM and comprehensive cardiac, vascular and OB packages.

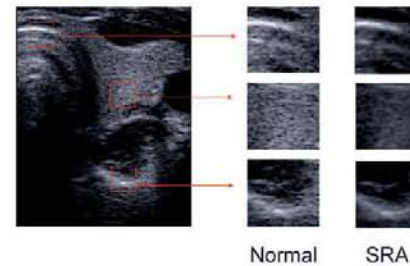
A workflow-oriented user interface, one-touch key quick operation, i-CINE, free-arm LCD and three active probe connectors makes the IVIS 60 EXPERT a state-of-the-art imaging system for all EXPERTS!

## Tissue harmonic imaging (THI)

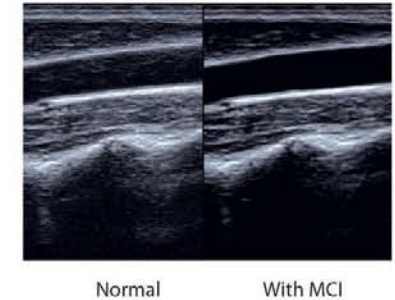
Available on all probes.



## Speckle Reduction Algorithm (SRA)

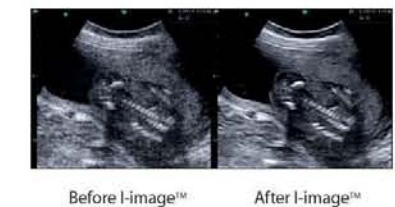


## Multiple Compound Imaging (MCI)



## I-image™

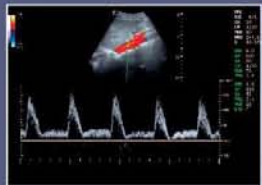
- reduced speckle, noise and haze in image
- improve image smoothness, while still enhances edges and lines to display more sharply defined structures



# Shared Service, Premium Images



## Abdominal



Aorta, D Mode



Kidney, Directional PD Mode



Hydronephrosis, B Mode



Hepatic Cyst, B Mode



Pancreas, B Mode



Liver, CFM Mode

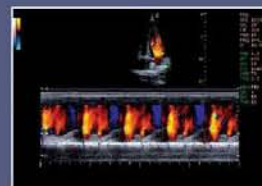
## Cardiac



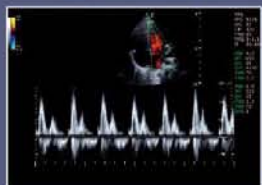
Apical 4 chamber and  
LV Long axis, Chroma, ECG



Apical 4 Chamber, B/BC Mode



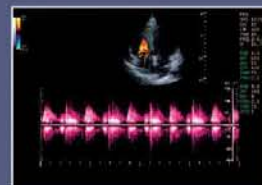
Apical 4 Chamber, Color M Mode



Color Flow of Mitral Valve,  
PW Mode



LV Short axis, Steering M Mode



Regurgitation of Tricuspid, CW Mode

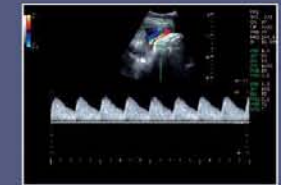
## OB & GYN



Fetal Aorta Arch, B/BC Mode



Umbilical Cord, CFM Mode



Umbilical Cord, D Mode



Fetal Head, B Mode



Genital, B Mode



Fetal Face, 3D

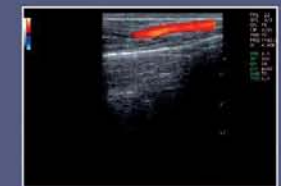
## Small parts



Epididymitis, B/BC Mode



Finger Vessel, CFM Mode



Radio artery, CFM Mode



Muscle of Leg, Panoramic Image



Thyroid, B/B Mode



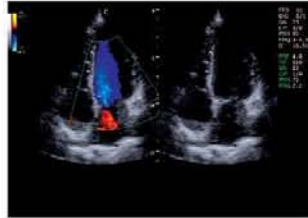
Right Testicle, B Mode



# Extended Features

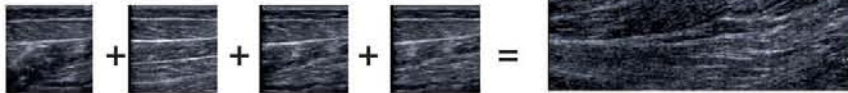
## Extended cardiac package

CW, ECG, Steering M mode, Color M



## Panoramic Imaging

Extend your view to a wider field for diagnosis of a big lesion, muscle or thyroid.



# Ergonomic Design Efficient workflow

## i-CINE™, i-Zoom™

Instant CINE-CINE can be played instantly after scan and press FREEZE Key, Up to 7000 frames CINE.

### Intelligent Zoom

- Up to 16X Pan Zoom
- Real-time Zoom
- Freeze Zoom

## One touch key

- AIO (Automatic Imaging Optimization),
- Auto Doppler.



# Specifications

## Imaging modes:

- B,2B,4B,B/M
- CFM, B/BC, Color M
- PW Mode, HPRF, CW
- Power Doppler / Directional PD
- Instant Triplex, Duplex
- Trapezoidal, Panoramic
- Free-hand 3D
- Chroma B/PW/CW

## Probe

- Electronic Convex, Linear, Transvaginal, Phased array, Pediatric probe
- Wideband (broadband) Multi-frequency

## Image processing technology

- THI on all probes
- Speckle Reduction Algorithm (SRA)
- Multiple Compound Imaging (MCI)
- i-Image™

## Measurement & Report packages

- OB&GYN
- Cardiac
- Vascular
- Urology

## Professional Clinical Applications

- Abdomen
- Cardiology
- Gynecology
- Obstetrics
- Urology
- Vascular and small parts
- Pediatrics
- Musculoskeletal

## Standard configuration

Main unit, 15" LCD monitor, 3 probe connectors, Hard disk(160GB), DVD-RW, 2 USB Ports

## Options

- 3.5MHz Convex Probe
- 7.5MHz Linear Probe
- 6.0MHz Transvaginal Probe
- 5.0MHz Pediatric Probe
- 3.0MHz Phased array Probe
- TSS
- Extended Cardiac Package: ECG, Steering M, CW, Color M
- Free-hand 3D
- i-Image™
- B&W, Color Video Printer
- DICOM

