



XC-301 Magnified Human Larynx Model

A functional model that demonstrates movements of the epiglottis and cartilages in the voice box. It helps the students to require and understanding of the morphology and structure of the respiratory tract and phonetic organ. Dissectible into 3 parts, 3 times enlarged. Size: 11.5x11x24CM.

Packing: 12pcs/carton, 66x28x27cm, 8kgs

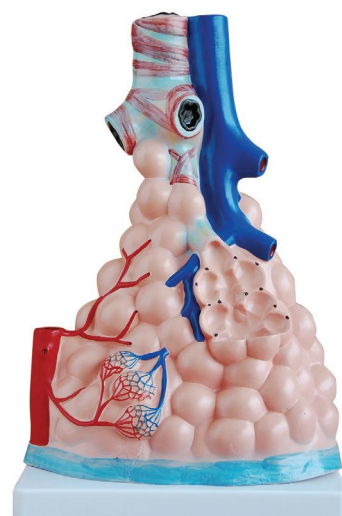
XC-302 Magnified Pulmonary Alveoli Model

The model shows the small branches of principal bronchus:

1. Section of bronchiole of no cartilage.
2. The relation between pulmonary alveoli and terminal bronchiole.
3. The structure of alveolar sac and alveolar duct.
4. The capillary rete in the alveolar septa.

Size: 26x15x35CM

Packing: 4pcs/carton, 81x41x29 cm, 8kgs



XC-305 Expansion Model of Human Teeth

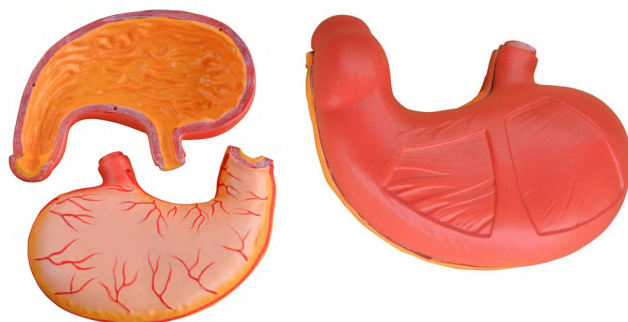
This model shows the morphological differences of the incisor, canine and molar teeth. Dissections of the canine and molar teeth demonstrate the structure of the enamel, dental pulp cavity. 3pcs/set. 12 times enlarged.

Packing: 10sets/carton, 82x44x33cm, 24kgs

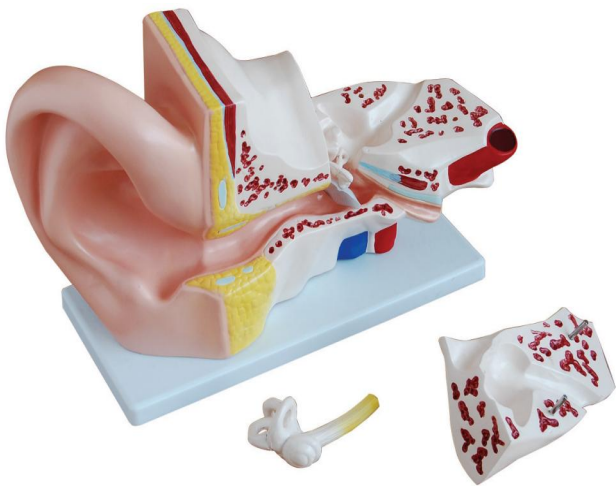
XC-306 Stomach Model

With the longitudinal section, the model shows the structures of the gastric folds, pyloric valve, pyloric sphincter muscles, gastric mucosa and the transitional mucosa of the gastric-esophagus. Made of hard plastic and magnified 2 times of the natural size.

Packing: 10pcs/carton, 51x47x34cm, 13kgs



XC-300 Anatomical Series



▲ XC-303A Giant Ear Model

This model shows three main structural parts of the hearing organ (external ear, middle ear, internal ear) and the position of the equilibrium organ of human body. 5 times enlarged. Size: 42x24x16CM

XC-303A dissectible into 4 parts.

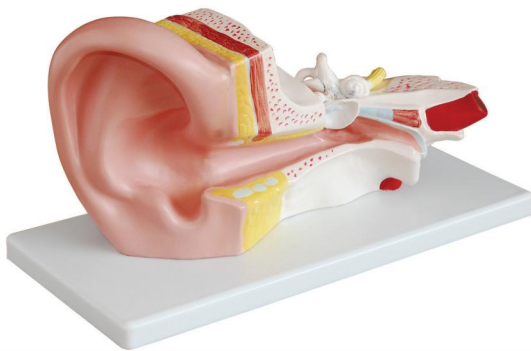
XC-303C dissectible into 6 parts.

XC-303A Packing: 6pcs/carton, 56x48x55cm, 15kgs

XC-303C Packing: 6pcs/carton, 55x47x59cm, 15kgs



▲ XC-303C New Style Giant Ear Model



◀ XC-303B Middle Ear Model

This model shows all major structures related to hearing and balance. Dissectible into 2 parts, 3 times enlarged. Mounted on plastic base. Size: 32x16x11CM.

Packing: 10pcs/carton, 73x32x42cm, 11kgs

▶ XC-303D Desktop Ear Model

Representation of the outer, middle, and inner ear. 1.5 times enlarged. On stand.

Packing: 32pcs/carton, 53x30x41m, 20kgs





XC-304 Brain Model

Demonstrate external features of human brain as a whole, as well as the relations between the component portions. Dissectible into 3 parts. On stand. Size: 18.5x14x13.5CM.

Packing: 18pcs/carton, 53x39x55cm, 15kgs

XC-304A New Style Brain Model

Demonstrate external features of human brain as a whole, as well as the relations between the component portions. Dissectible into 3 parts. Size: 18.5x14x13.5CM. On stand.

Packing: 18pcs/carton, 53x39x55cm, 15kgs



XC-304B New Style Brain Model 9 Parts

External features of the brain: cerebral hemisphere, brain stem, cerebellum. Dissectible into 9 parts. life-size, On stand. Size: 18.5x14x13.5CM.

Packing: 18pcs/carton, 53x39x55cm, 16kgs

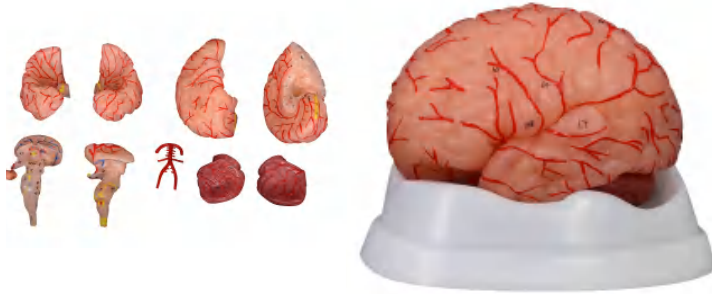
XC-308 Brain with Arteries

External features of the brain: cerebral hemisphere, brain stem, cerebellum. The arterial supply of the brain: sources, vertebral, internal carotid arteries, arterial supply of the cerebellum and cerebrum. Dissectible into 8 parts. On stand. Size: 18.5x14x13.5CM.

Packing: 18pcs/carton, 53x39x55cm, 16kgs



XC-300 Anatomical Series



XC-308D Brain with Arteries 9 Parts

External features of the brain: cerebral hemisphere, brain stem, cerebellum. Dissectible into 9 parts, life-size with number. On stand. Size: 18.5x14x13.5CM.

Packing: 18pcs/carton, 53x39x55cm, 15kgs

XC-318 Brain with Arteries on Head

This model shows the brain structure inside the skull. Two halves brains can be disassembled into: frontal with parietal lobes, temporal with occipital lobes, half of brain stem, half of cerebellum. Dissectible into 9 parts, life-size.

Packing: 8pcs/carton, 48x39x51cm, 14kgs



XC-318B Head with Brain

This model shows the head structure including brain structure inside the skull. Dissectible into 10 parts, life-size.

Packing: 8pcs/carton, 53x39x47cm, 14kgs

XC-309 Nasal Cavity

This model shows the external and internal structures of the nasal cavity. Magnified 1/2 the natural size. Made of PVC.

Packing: 20pcs/carton, 54x28x21cm, 6kgs





XC-307 Jumbo Heart Model

This model shows the external features and internal structures of the heart and its relation with the large blood vessels. A clearer conception of the routes of the systemic and pulmonary circulation can be obtained. Dissectible into 3 parts, 4 times enlarged. Made of PVC plastic. Size: 25x23x23CM.

Packing: 8pcs/carton, 58x45x50cm, 16kgs

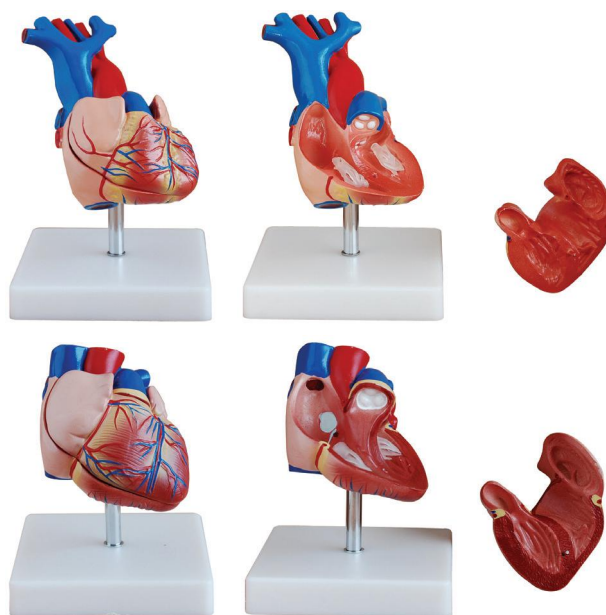
XC-307A Life-Size Heart Model

These two models show the anatomy of human heart with ventricles, atriums, valves, veins, and the aorta in great anatomical detail. The front heart wall is removable to view the chambers and internal structures. Dissectible into 2 parts.

XC-307A Packing: 50pcs/carton, 66x30x38cm, 25kgs

XC-307B Packing: 32pcs/carton, 53x30x41cm, 16kgs

XC-307B New Style Life-Size Heart Model



XC-307C New Style Jumbo Heart Model

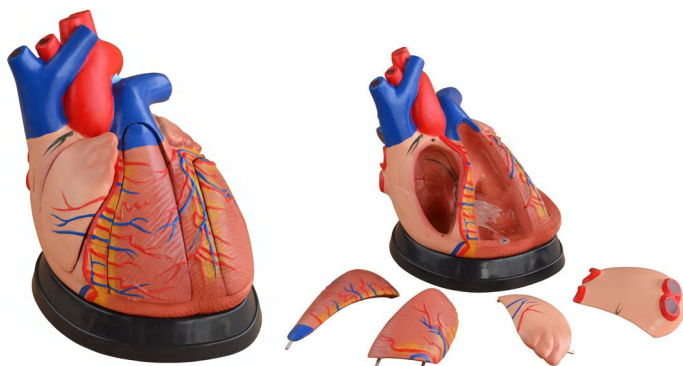
This model shows the anatomy of human heart with aortic arch, coronal section of atrium and ventricle, valves, and veins in great anatomical detail. Dissectible into 3 parts, 4 times enlarged.

Packing: 8pcs/carton, 58x45x50cm, 17kgs

XC-307D Middle Heart Model

This model shows external features and internal structures of heart and its relation between large blood vessels. Dissectible into 5 parts, 3 times enlarged.

Packing: 8pcs/carton, 51x48x39cm, 12kgs



➤ XC-310-1 Kidney Model (1 part)

The coronary section of the right kidney shows the renal hilus, renal blood vessels, ureter, renal pelvis of the kidney, the renal substance is demonstrated by its medulla and cortex, medullary pyramid, papillae etc. 2 times enlarged. Size: 20x10x4CM. On stand.

Packing: 20pcs/carton, 50x35x42cm, 11kgs



◀ XC-310-2 Kidney Model (2 parts)

The coronary section of the right kidney shows the renal hilus, renal blood vessels, ureter, renal pelvis of the kidney, the renal substance is demonstrated by its medulla and cortex, medullary pyramid, papillae etc. 2 times enlarged. Size: 20x10x7CM. On stand.

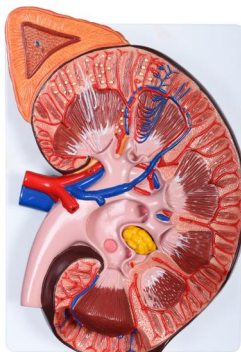
Packing: 20pcs/carton, 50x35x42cm, 13kgs



➤ XC-310-3 Human Kidney with Adrenal Gland

This model features the kidney with adrenal gland, renal and adrenal vessels and upper portion of the ureter. Dissected into 2 parts to reveal the cortex medulla, vessels and renal pelvis. Life size.

Packing: 32pcs/carton, 62x29x29cm, 15kgs



◀ XC-310-4 Enlarged Kidney Model

This model shows 3 times enlarged of the kidney, with adrenal glands, 2 components, showing the renal cortex, renal medulla, proximal convoluted tubule, distal convoluted tubule, medullary loop, collecting duct, and papillary duct, calyces renales minors, calyces renales majors, renal pelvis, ureter, interlobular artery, vein, renal artery, vein and renal capsule.

Packing: 9pcs/carton, 58x37x29cm, 10kgs



XC-311 Liver, Pancreas and Duodenum Model

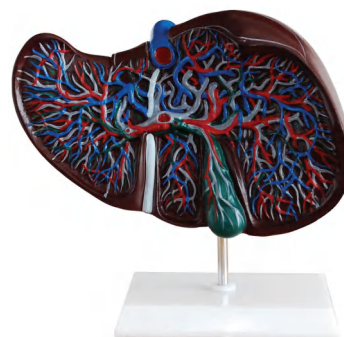
This model demonstrates the liver, spleen, blood vessels and pancreas. External structures are illustrated as well as the pancreatic duct of the pancreas. Also shows the abdominal aorta and inferior vena cava. Dissectible into 3 parts. Size: 23x12.5x26.5CM.

Packing: 18pcs/carton, 53x39x55cm, 17kgs

XC-312 Liver Model

This model shows the basic anatomical structures of the liver. The complex vessels network in the opened liver, displayed in different colors in the liver model: hilus vessels, the extra-hepatic and intra-hepatic bile ducts. On stand.

Packing: 12pcs/carton, 53x35x45cm, 11kgs



XC-322 Circulatory System

The model represents a general view of the human circulation. It includes the heart (2 parts), lungs, liver, spleen, kidneys and relevant connections with the pulmonary and systematic circulatory pathways.

Packing: 2pcs/carton, 91x35x31cm, 6kgs

XC-315 Digestive System

This life-size digestive system model demonstrates the entire digestive system in graphic relief. It features: nose, mouth cavity and pharynx, esophagus, GI tract, liver with gallbladder, pancreas and spleen. The duodenum, caecum and rectum of the digestive system are opened. Dissectible into 3 parts. Mounted on baseboard.

Packing: 2pcs/carton, 91x33x27cm, 9kgs



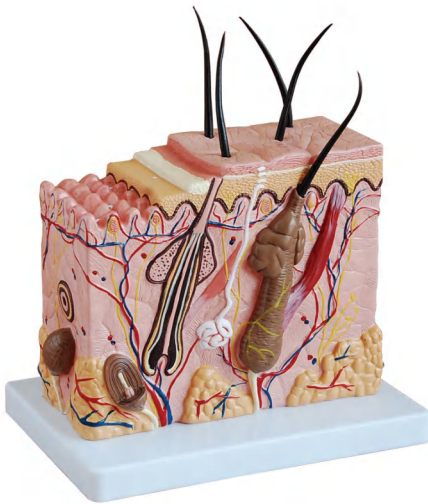
XC-300 Anatomical Series



⬆ XC-313 Enlarged Skin Model

A greatly enlarged (105 times) cross sectional view of the human skin showing three layers and a close-up view of a hair follicle, sweat gland, fatty tissue and more. Front, side and back view. Not dissectible. Size: 27x10x31CM.

Packing: 5pcs/carton, 88x38x38cm, 10kgs



⬅ XC-313-2 Skin Block Model

This model shows a section of human skin in three dimensional forms. Hair, sebaceous and sweat glands, receptors, nerves and vessels are shown in detail. 70 times enlarged.

Packing: 5pcs/carton, 70x27x25cm, 7kgs

➤ XC-313-3 Skin Section Model

This model shows layers of skin, first rudiments of hair, sweat gland, sense organs of skin. Connected with side hinges. On base.

Packing: 5pcs/carton, 78x27x29cm, 8kgs



➤ XC-316 Giant Eye Model

The different parts of the eyeball model are detachable to show the following structures.

1. Tunica external: showing cornea and sclera with attachments of ocular muscles and optic nerve
 2. Tunica media: showing the iris, the ciliary body and the chorioid
 3. Tunica internal is retina
 4. Refraction media: showing the lens and the vitreous body
- 6 times enlarged. On stand.



Packing: 18pcs/carton, 53x39x55cm, 22kgs



⬅ XC-316A Giant Eye Model

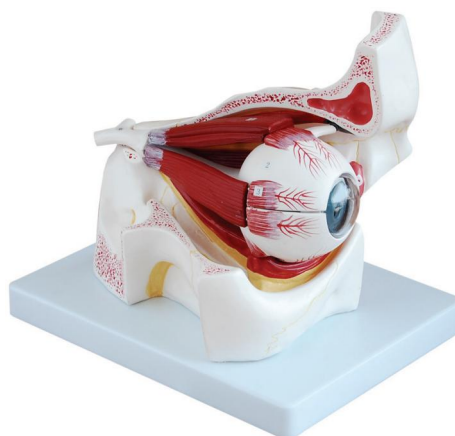
This model is upgraded from XC-316, change the eyeball to white color.

Packing: 18pcs/carton, 53x39x55cm, 22kgs

➤ XC-316B Eye with Orbit

The model shows the eyeball with optic nerves and muscles in its natural position in the bony orbit. Dissectible into 10 parts, 3 times enlarged.

Packing: 8pcs/carton, 53x40x47cm, 10kgs



⬅ XC-317 Expansion Model of Urinary Bladder

This model shows the male urinary bladder with the prostate gland surrounding the urethra. Dissected medially to expose both internal and external structures.

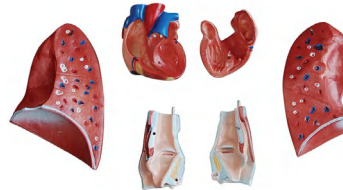
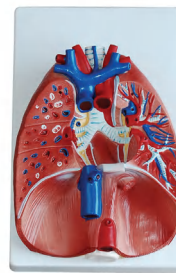
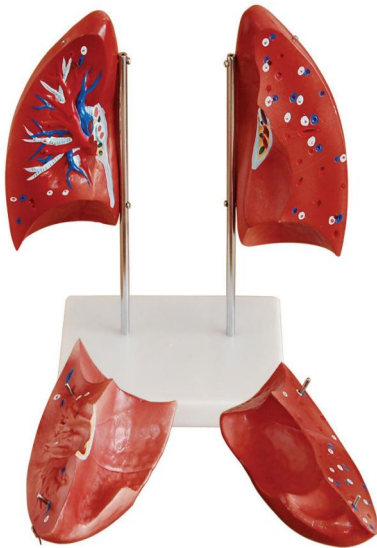
Packing: 20pcs/carton, 55x39x47cm, 13kgs

XC-300 Anatomical Series

➤ XC-320 Larynx, Heart and Lung Model

This life-size model is separated into 7 parts. The lungs have two removable lobes to show the internal structures, the heart bisects showing atria, ventricles and valves, the larynx bisects and the diaphragm is shown. On stand. Size: 36x23x12CM.

Packing: 6pcs/carton, 48x45x40cm, 14kgs



◀ XC-321 Lung Model (4 Parts)

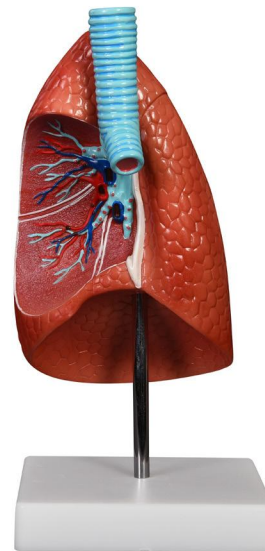
A life-size model separating into 4 parts. The lungs have two removable lobes to show the internal structures. On stand.

Packing : 8pcs/carton, 67x52x35cm, 14kgs

➤ XC-321B Lung Model (1 Part)

Life-size, cutaway lung model shows bronchus, arteries, veins, lymph nodes, bronchial passage and trachea bifurcation.

Packing : 10pcs/carton, 77x32x36cm, 6kgs



◀ XC-330 Model of the Transparent Lung Segment

This model presents 10 segments in the right lung and 8 in the left. The distributions of the bronchial tree can be observed through the transparent lungs. The lung made of transparent plastic. The trachea and bronchial tree is made of PVC. 2 times enlarged.

Packing: 4pcs/carton, 83x36x39cm, 6kgs



XC-319 Median Section of the Head

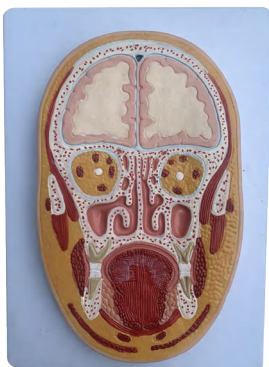
This model shows all relevant structures of the human head in great detail.

Packing: 5pcs/carton, 38.5x35x25cm, 5kgs

XC-319A Frontal And Median Section of The Head

Life size representation of the superficial and the internal structures of the head and neck. Comparison between frontal and median sections provides a superior understanding of the anatomical structures of the head and neck.

Packing: 2pcs/carton, 46x32x24cm.2kgs



XC-319B Frontal Section of the Head

This model shows frontal section of the head passing through the cranial bone, frontal brain, the right and left orbita, the nasal cavity, the cavity of pharynx and the oral cavity.

Packing: 10pcs/carton, 39x35x29cm, 9kgs

XC-324 Model of the Head

This model shows the interior parts of the mouth cavity and pharynx with network of vessels and trigeminal nerves.

Packing: 10pcs/carton, 40x35x29cm, 6kgs



XC-300 Anatomical Series



▲ XC-325 Palm Anatomy

These life size models show the superficial and internal structures of the palm. Dissectible into 4 parts.

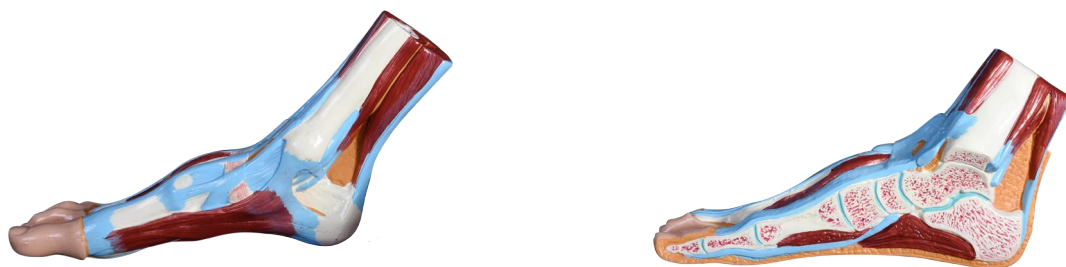
Packing: 10sets/carton, 74x43x29cm, 9kgs



▲ XC-326 Normal, Flat and Arched Foot

These models show the anatomical structure and the distal end of tibia of normal, flat and arched foot.

Packing: 10sets/carton, 74x43x29cm, 13kgs



▲ XC-326A Foot Anatomical Model

XC-326A Demonstrates the anatomical features of muscle, sinew, and bones.
XC-326B Shows the medium section of foot.

▲ XC-326B Foot Section Model

Packing: 6pcs/carton, 55x35x33cm, 4kgs



XC-331 Male Urogenital System

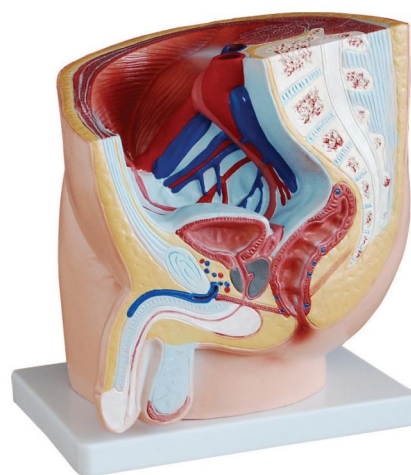
Demonstrate the external features of the urogenital system and the internal structures of the kidney, urinary bladder, penis and testicle. Made of PVC plastic.

Packing: 16pcs/carton, 75x39x40cm, 16kgs

XC-331A Human Male Pelvis Section (1 part)

This median section model shows the normal position of male genital organs with bladder and rectum in the male pelvis. Made of PVC.

Packing: 8pcs/carton, 57x46x62cm, 15kgs



XC-332 Female Urogenital System

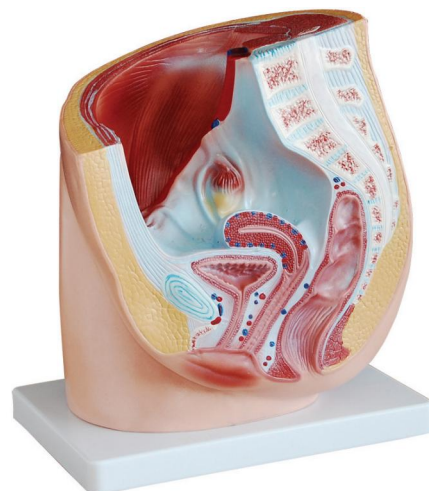
This model shows kidney, ureters, urinary bladder, uterus, accessories of uterus, vagina, ovary membrane, ligaments, uterus ligament and its artery etc. Made of PVC plastic.

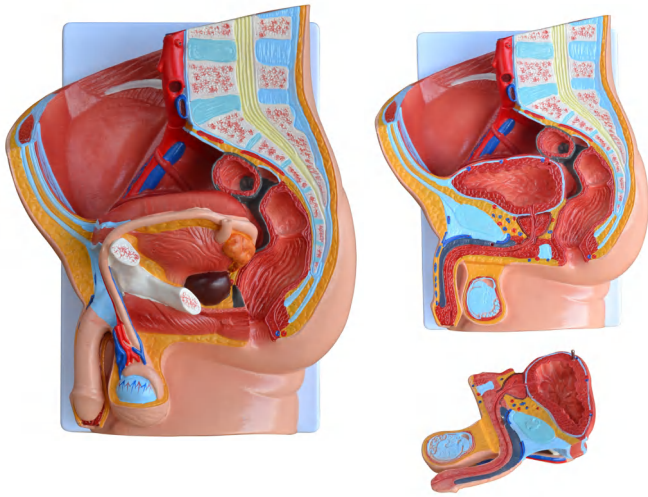
Packing: 16pcs/carton, 75x39x40cm, 14kgs

XC-332A Human Female Pelvis Section (1 Part)

The median section model shows female genital organs with bladder and rectum. The abdominal and pelvis muscles are detailed shown. Made of PVC plastic.

Packing: 8pcs/carton, 57x46x62cm, 15kgs





XC-331B Human Male Pelvis Section (2 Parts)

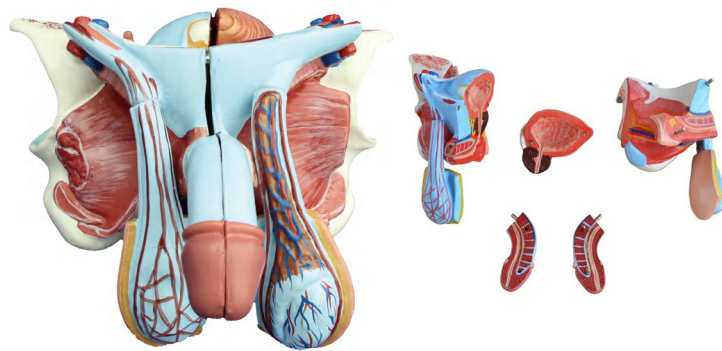
This median section model shows the normal position of male genital organs with bladder and rectum in the male pelvis. Dissectible into 2 parts.

Packing: 4pcs/carton, 37x55x37cm, 10kgs

XC-332B-1 Human Female Pelvis Section (2 Parts)

This median section model shows the normal position of female genital organs with bladder and rectum in the female pelvis. The abdominal and pelvis muscles are detailed shown. Made of PVC plastic.

Packing: 2pcs/carton, 40.5x33x40.5cm, 6kgs



XC-331D Male Genital Organ Model

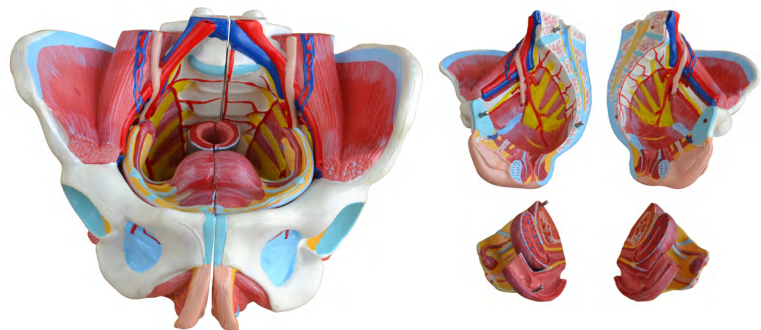
This anatomical model shows the interior and exterior structure of male genital organ. Dissected into 5 parts. Life size.

Packing: 20pcs/carton, 50x35x42cm, 16kgs

XC-332D Female Pelvis Model

This model is and painted in life-like color. It shows all the interior and exterior female organs, blood vessels, ligaments, nerves, muscle structures within the framework of the bony pelvis. Life size.

Packing: 10pcs/carton, 74x43x29cm, 11kgs





XC-331C Advanced Male Internal & External Genital Organs

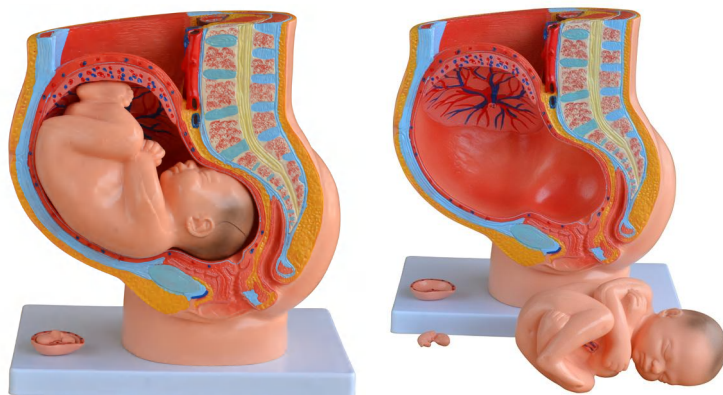
Used to practice the insertion of a lubricated catheter through a collapsible external urethra meatus into the bladder with this realistic model.

Packing: 20pcs/carton, 55x39x47cm, 10kgs

XC-332C Advanced Female Internal & External Genital Organs

This model allows students to locate the urethra and pass a lubricated catheter through it into the bladder.

Packing: 20pcs/carton, 50x35x42cm, 10kgs



XC-332B Human Female Pelvis Section (4 parts)

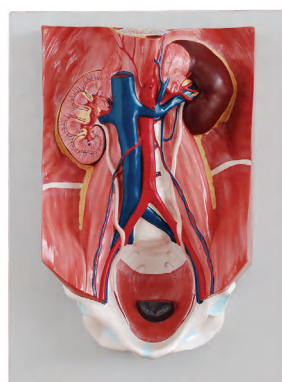
This median section model shows the female pelvis during the 40th week of pregnancy with a removable fetus. Demonstrate normal position of child before birth, female genital organs, human reproductive and urinary systems. A uterus with embryo in 3rd month of pregnancy is mounted on base for study.

Packing: 4pcs/carton, 77x54x42cm, 16kgs

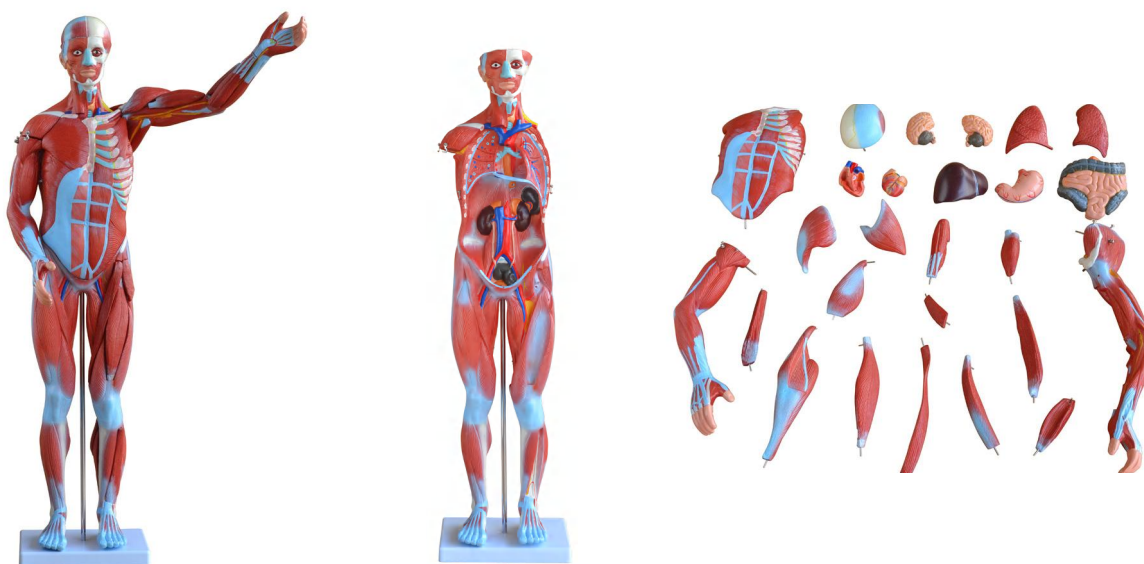
XC-333 Urinary System Model

The model shows the structures of retroperitoneal cavity, pelvis with bones and muscles, inferior vena cava, aorta with its branches, upper urinary tract, kidney with adrenal gland, ureter, bladder, etc. Dissectible into 4 parts.

Packing: 5pcs/carton, 85x39x28cm, 11kgs



XC-300 Anatomical Series



▲ XC-334 80CM Human Muscle Model Male (27 Parts)

This human muscle model including 27 dissectible parts: body, cut calvarium, brain (2 parts), thoracic and abdominal wall, right arm, left arm (5 parts), leg (9 parts), lung (2 parts), heart (2 parts), liver, stomach and intestine. Size: 80CM.

Packing: 1pcs/carton, 90x39x26cm, 8kgs

▶ XC-335 50CM Human Muscle Model Male (1 Part)

This model is quite suitable for muscle anatomical study, which shows topography of muscle.

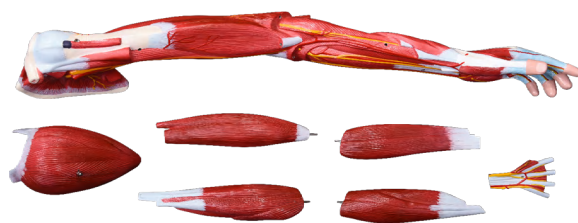
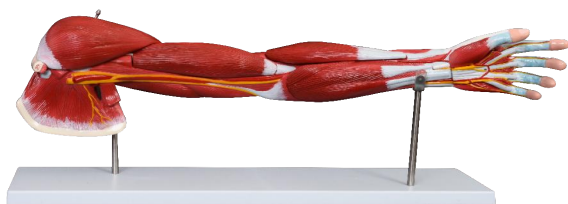
Packing: 4pcs/carton, 55x41x56cm, 8kgs



▲ XC-338 Life Size Human Muscle Foot Model (7 Parts)

This anatomically detailed model of the foot and lower leg can be disassembled into 7 removable parts for detailed study of the foot and ankle. The foot skeleton features not only the bones but also the muscles, tendons, ligaments, nerves, arteries, and veins of the foot.

Packing: 10pcs/carton, 55x35x33cm, 11kgs



⬆ XC-336 Muscle of Human Arm (7 Parts)

This model can be dissectible into 7 parts to show detailed anatomical structure of the arm, with superficial and deeper muscles, vascular structures, nerves and ligaments in greater detail. Hand and the shoulder are well represented.

Packing: 1pcs/carton, 77x22x19cm, 4kgs

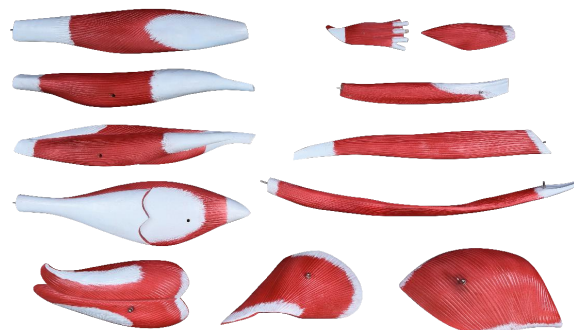
⬅ XC-337 Muscle of Human Leg (13 Parts)

This deluxe muscular model shows in great details the anatomical structure of the leg. The superficial and deeper muscles, vascular structures, nerves and ligaments are all accurately represented.

The following parts are removable:

- Sartorius
- Long head of biceps
- Gluteus maximus
- Soleusm
- Gastrocnemius
- Gracilis
- Semitendinosus and Semimembranosus
- Rectus femoris
- Extensor digitorumlongus
- Sole of foot
- tensor fasciae latae.

Packing: 1pcs/carton, 109x26x23cm, 8kgs

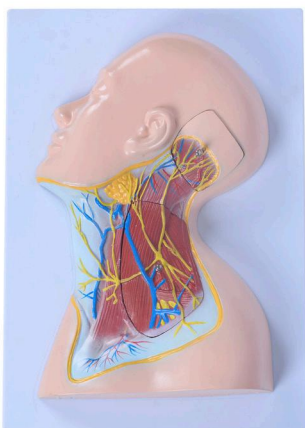
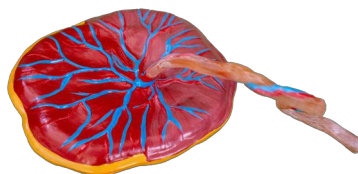


XC-300 Anatomical Series

➤ XC-323 Placenta Model

This model shows the placenta structure and the relationship between placenta and umbilical cord.

Packing: 5pcs/carton, 39x35x25cm, 7kgs



◀ XC-324B Nerves of Neck Region

This life size model shows the distribution of superficial branches of the cervical plexus, 3 parts.

Packing: 2pcs/carton, 46x32x24cm, 6kgs



➤ XC-339 Life-Size Human Muscle Model (29 Parts)

This life size muscle model including 29 dissectible parts: body, cut calvarium, brain (2 parts), thoracic and abdominal wall, right arm, left arm (5 parts), right leg, left leg (10 parts), lung (2 parts), heart (2 parts), liver, stomach and intestine. Height: 175cm, width, 86cm, Width: 24cm.

Packing: 1pcs/carton, 100x50x78cm, 40kgs

