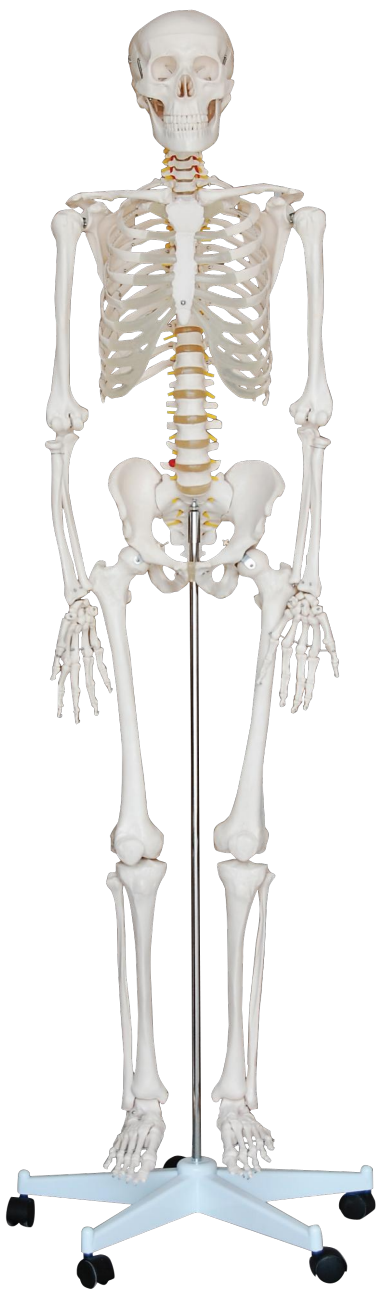


➤XC-101 Life-Size Skeleton 180CM Tall

This life-size articulated adult plastic skeleton is ideal for teaching the basics of human anatomy. The arms and the legs are removable for study. Features nerve branches, vertebral artery and herniated lumbar disc. The skull includes movable jaw, cut calvarium, suture lines and 3 removable lower teeth. Made of washable and unbreakable PVC plastic. Size: 180CM.

Packing: 1pcs/carton, 100x46x29cm, 13kgs



➤ XC-102 85CM Skeleton

This half-size skeleton contains 200 bones of an adult human. The skull features movable jaw, removable calvarium. Arms are movable and legs are removable. Size: 85CM.

Packing: 6pcs/carton, 74x33x52.5cm, 14kgs

### ✓ XC-101A Skeleton with Muscles and Ligaments 180CM Tall

Based on XC-101, this model is painted to show the muscles and ligaments. The left side of the skeleton shows the points of origin (red) and the points of insertion (blue) of the muscles. Size:180CM.

Packing: 1pcs/carton, 100x46x29cm, 14kgs



## XC-100 Skeleton Series



### ◀ XC-102A 85CM Skeleton with Spinal Nerves

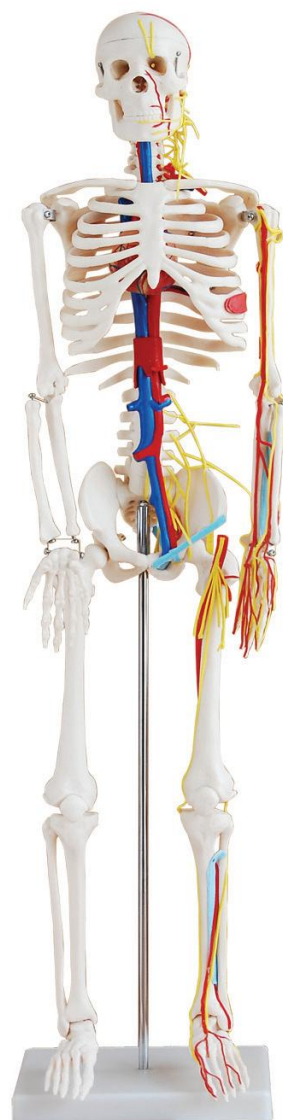
This model features spinal column, nerve roots, vertebral artery, a herniated disc, cartilage highlighted in green, removable 3-piece skull and extremities. Size: 85CM.

Packing: 6pcs/carton, 74x33x52.5cm, 14kgs

### ▶ XC-102B 85CM Skeleton with Nerves and Blood Vessels

This model depicts the position, course and distribution of main vessel and peripheral nerves of the human body. Size: 85CM.

Packing: 6pcs/carton, 74x33x52.5cm, 15kgs





### ◀ XC-102C 85CM Skeleton with Painted Muscles

Based on XC-102, this model is painted to show the muscles. The left side of the skeleton shows the points of origin (red) and the points of insertion (blue) of the muscles. Size: 85CM.

Packing: 6pcs/carton, 74x33x52.5cm, 14kgs

### ▶ XC-103 45CM Mini Skeleton

This miniature skeleton model features a movable jaw on springs, removable calvarium, arms are movable, legs are removable for individual study. Size: 45CM.

Packing: 24pcs/carton, 69x55x35cm, 15kgs



## XC-100 Skeleton Series



### ◀ XC-104 Life-Size Skull

This life-size adult skull features a movable jaw, cut calvarium, suture lines and 3 removable lower teeth - incisor, cuspid and molar. Dissected into 3 parts. Size: 19x15x21CM.

Packing: 18pcs/carton, 53x39x55cm, 18kgs

### ▶ XC-104B Life-Size Skull with Painted Muscles

Based on XC-104D skull model, this model is painted to show the muscles. The left side of the skull shows the points of origin (red) and the points of insertion (blue) of the muscles.

Packing: 18pcs/carton, 49x45x54cm, 19kgs



### ◀ XC-104C Life-Size Skull with Colored Bones

This is advanced model of XC-104 life-size skull, bones painted in different colors for precise study. Can be disassembled into 3 parts. Size: 19x15x21CM.

Packing: 18pcs/carton, 53x39x55cm, 18kgs

### ▶ XC-104D Deluxe Life-Size Skull Style D

This new developed life-size skull features a movable jaw, cut calvarium and suture lines. Have a more obvious manifestations of bone. Can be disassembled into 3 parts. Made of PVC.

Packing: 18pcs/carton, 49x45x54cm, 19kgs







#### ◀ XC-104E Skull Model with 8 Parts Brain

This model is based on XC-104D, includes 8 parts brain: frontal and parietal lobe, temporal and occipital lobe, encephalic trunk and cerebellum.

Packing: 18pcs/carton, 49x45x54cm, 23kgs

#### ▶ XC-135 Skull with Cervical Spine

This skull is flexibly mounted on a cervical spine. Also represent the hindbrain, spinal cord, cervical nerves, vertebral arteries, basilar artery and rear cerebral arteries.

Packing: 10pcs/carton, 74x43x29cm, 14kgs



#### ◀ XC-106 Miniature Plastic Skull

This model shows the major structure of the different bones of the skull. The calvarium can be removed and the mandible is spring hanged to view the bone structures of the mouth. Size: 10x8x10CM.

Packing: 32pcs/carton, 54x30x41cm, 9kgs

## XC-100 Skeleton Series



### ◀ XC-135E Skull with 8 parts Brain and Cervical Spine

This model consists of the skull and 7 cervical vertebrae, with the cervical vertebral artery, with a base, as well as display the posterior brain, spinal cord, cervical nerve, vertebral artery, basilar artery and posterior cerebral artery, and on this basis, there are 8 sets of cerebral artery models, which can be divided into anterior lobe and parietal lobe, temporal lobe and occipital lobe, Brain stem and cerebellum.

Packing: 10pcs/carton, 74x43x29cm, 20kgs

### ✔ XC-107D Life-Size Vertebral Column Disarticulate Model

This model consists of 7 cervical vertebrae, 12 thoracic vertebrae, 5 lumbar vertebrae, and 1 tail vertebrae, packaged in a plastic boxes.

Packing: 8pcs/carton, 62x56x41cm, 20kgs





### ◀ XC-107 Life-Size Vertebral Column

This model shows all significant features of each vertebra, including spinal cord, nerve roots, the vertebral artery, a herniated disc and vertebral notch etc. Special features include: flexible vertebral column, sacrum, occipital bone, vertebral artery, all nerve branches and herniated lumbar disc.

Packing: 2pcs/carton, 80x32x39cm, 7kgs



### ◀ XC-107A Vertebral Column with Painted Muscles

Based on XC-107, this model is painted to show the muscles. The left side of the vertebral column shows the points of origin (red) and the points of insertion (blue) of the muscles.

Packing: 2pcs/carton, 80x32x39cm, 7kgs

### ▶ XC-107C Didactic Vertebral Column

This model is upgraded from XC-107, and features different sections of the spinal column in different color: cervical vertebrae, thoracic vertebrae, lumbar vertebrae, sacrum and the coccyx.

Packing: 2pcs/carton, 80x32x39cm, 7kgs





## XC-100 Skeleton Series



### ◀ XC-105 Life-Size Vertebral Column with Pelvis

This model shows all significant features of each vertebra, including spinal cord, nerve roots, the vertebral artery, a herniated disc and vertebral notch etc. Special features include: flexible vertebral column complete with pelvis, sacrum, occipital bone, vertebral artery, all nerve branches and herniated lumbar disc.

Packing: 2pcs/carton, 80x32x39cm, 9kgs



### ◀ XC-105A Vertebral Column with Pelvis and Painted Muscles

Based on XC-105, this model is painted to show the muscles. The left side of the vertebral column shows the points of origin (red) and the points of insertion (blue) of the muscles.

Packing: 2pcs/carton, 80x32x39cm, 9kgs

### ▶ XC-105C Didactic Vertebral Column with Pelvis

This model is upgraded from XC-105, and features different sections of the spinal column in different color: cervical vertebrae, thoracic vertebrae, lumbar vertebrae, sacrum and the coccyx.

Packing: 2pcs/carton, 80x32x39cm, 9kgs





### ◀ XC-126 Life-Size Vertebral Column with Pelvis and Femur Heads

This model shows all significant features of each vertebra, including spinal cord, nerve roots, the vertebral artery, a herniated disc and vertebral notch etc. Special features include: flexible vertebral column complete with pelvis, sacrum, occipital bone, femur heads, vertebral artery, all nerve branches and herniated lumbar disc.

Packing: 2pcs/carton, 88x32x39cm, 10kgs



### ◀ XC-126A Vertebral Column with Pelvis and Femur Heads and Painted Muscles

Based on XC-126, this model is painted to show the muscles. The left side of the vertebral column shows the points of origin (red) and the points of insertion (blue) of the muscles.

Packing: 2pcs/carton, 88x32x39cm, 10kgs

### ▶ XC-126C Didactic Vertebral Column with Pelvis and Femur Heads

This model is upgraded from XC-126, and features different sections of the spinal column in different color: cervical vertebrae, thoracic vertebrae, lumbar vertebrae, sacrum and the coccyx.

Packing: 2pcs/carton, 88x32x39cm, 10kgs



## XC-100 Skeleton Series



### ◀ XC-109 Life-Size Shoulder Joint

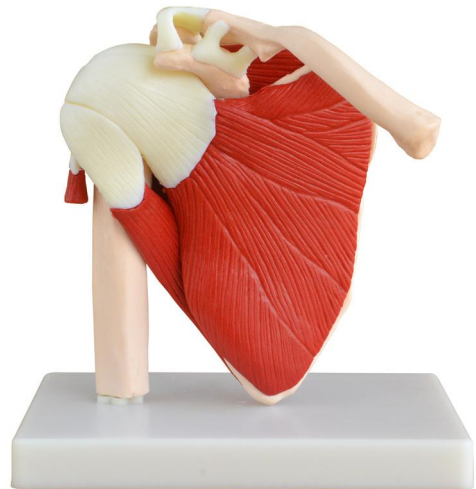
Demonstrates abduction, adduction, anteversion, retroversion and internal / external rotation. Include flexible, artificial ligaments. Life-size, on stand. Size: 17.5x15x21CM.

Packing: 10pcs/carton, 74x43x29cm, 8kgs

### ▶ XC-109A Life Size Muscled Shoulder Joint

This life size right shoulder includes: infraspinatus, subscapularis, supraspinatus, and teres major and minor muscles; acromion, clavicle, humerus, scapula bones and the related ligaments and tendons.

Packing: 10pcs/carton, 74x43x29cm, 12kgs



### ◀ XC-110 Life-Size Hip Joint

Demonstrate abduction, anteversion, retroversion, and internal / external rotation. Include flexible, artificial ligaments. Life-size, on stand. Size: 21x19x28CM.

Packing: 10pcs/carton, 82x44x33cm, 12kgs



### ◀ XC-111 Life-Size Knee Joint

Demonstrate abduction, anteversion, retroversion, internal / external rotation. Include flexible, artificial ligaments. Life-size, on stand. Size: 12x12x33CM.

Packing: 10pcs/carton, 77x32x36cm, 10kgs

### ▶ XC-112 Life-Size Elbow Joint

Demonstrate abduction, anteversion, retroversion, internal / external rotation of the radius. Include flexible, artificial ligaments. Life-size, on stand. Size: 17x14.5x24CM.

Packing: 10pcs/carton, 74x43x29cm, 6kgs



### ◀ XC-113 Life-Size Foot Joint

Demonstrate all the foot functionality and the external anatomical structures. Made of PVC plastic, life size, on stand. Size: 12x22x27CM.

Packing: 10pcs/carton, 55x35x33cm, 8kgs

## XC-100 Skeleton Series



### ◀ XC-113A Life-Size Foot Joint with Ligaments

Demonstrate all of foot functionality and the external anatomical structures. Include flexible, artificial ligaments. Made of PVC plastic, natural size, on stand. Size: 12x22x27CM.

Packing: 10pcs/carton, 55x35x33cm, 9kgs

### ▶ XC-114 Life-Size Hand Joint

Demonstrate all the hand functionality and the external anatomical structures. Made of PVC plastic, life size, on stand. Size: 11.5x8x24.5CM.

Packing: 12pcs/carton, 66x28x27cm, 4.5kgs



### ◀ XC-114A Life-Size Hand Joint with Ligaments

Demonstrate all the hand functionality and the external anatomical structures. Include flexible, artificial ligaments. Made of PVC plastic, life size, on stand. Size: 11.5x8x24.5CM.

Packing: 12pcs/carton, 66x28x27cm, 5kgs





### ◀ XC-115 Life-Size Pelvis with 5pcs Lumbar Vertebrae



### ◀ XC-115A Half-Size Pelvis with 5pcs Lumbar Vertebrae

Consist of hip bone, sacrum with coccyx and 5 lumbar vertebrae. On stand.

XC-115 Packing: 8pcs/carton, 58x45x50cm, 17kgs  
XC-115A Packing: 20pcs/carton, 50x35x42cm, 9kgs

- XC-116 Lumbar Set (2 pcs)
- XC-117 Lumbar Set (3 pcs)
- XC-118 Lumbar Set (4 pcs)

Life-size lumbar vertebrae are shown with normal intervertebral disc and spinal cord with nerve roots. On stand.

XC-116 Packing: 32pcs/carton, 62x29x29cm, 15kgs  
XC-117 Packing: 20pcs/carton, 50x35x42cm, 10kgs  
XC-118 Packing: 20pcs/carton, 50x35x42cm, 11kgs



### ◀ XC-119 Life-Size Lumbar Vertebrae with Sacrum & Coccyx and Herniated Disc



### ◀ XC-119A Mini Lumbar Vertebrae with Sacrum & Coccyx and Herniated Disc

Consist of the 5 lumbar vertebrae with intervertebral discs, sacrum with flap, coccyx, spinal nerves and dura mater of spinal cord. On stand.

XC-119 Packing: 10pcs/carton, 74x43x29cm, 12kgs  
XC-119A Packing: 32pcs/carton, 62x29x29cm, 10kgs

## XC-100 Skeleton Series



### ▲ XC-121 Life-Size Upper Extremity (In pairs)

Life-size arm, either left or right is available. Mounted on wire.

Packing: 25pairs/carton, 66x24x30cm, 17kgs



### ▲ XC-122 Life-Size Lower Extremity (In pairs)

Life-size leg, either left or right is available. Mounted on wire.

Packing: 5pairs/carton, 90x40x24cm, 14kgs



### ▲ XC-123 Adult Male Pelvis



### ▲ XC-124 Adult Female Pelvis

The size of these two models are just the same as the realities and made of PVC plastic. Comparing a male pelvis with a female one, the differences between these two can be listed as follow:

	Male	Female
Pelvis shapes:	Long and narrow	Short and broad
Pelvis cava:	Like a funnel	Like a barrel
Aperture pelvis superior:	Heart-like	Rounded
Sacrum:	Long and narrow	Broad and short
Angles of pelvis arch:	70-75 degree	90-100 degree
Symphysis pubica:	Long and narrow	Short and broad

XC-123 Packing: 10pcs/carton, 82x44x33cm, 13kgs

XC-124 Packing: 10pcs/carton, 74x43x29cm, 12kgs

### ➤ XC-120 Thoracic Spinal Column

This model consists of the 12 thoracic vertebrae with intervertebral discs, thoracic nerves and spinal cord, on stand.

Packing: 10pcs/carton, 62x29x29cm, 6kgs



### ◀ XC-125 Female Pelvic Muscles and Organs

This model is designed as an aid to the teaching of anatomy of female pelvis in middle institutes. It demonstrates pelvic muscles and pelvic organs as a whole. Life size.

Packing: 10pcs/carton, 74x43x29cm, 16kgs

### ➤ XC-127 Birth Demonstration Model

This model consists of 2 innominate bones, sacrum, coccyx, with fetal skull which is firmly connected with the model by means of a flexible metal tube which can be fixed in any position.

Packing: 8pcs/carton, 58x45x50cm, 15kgs

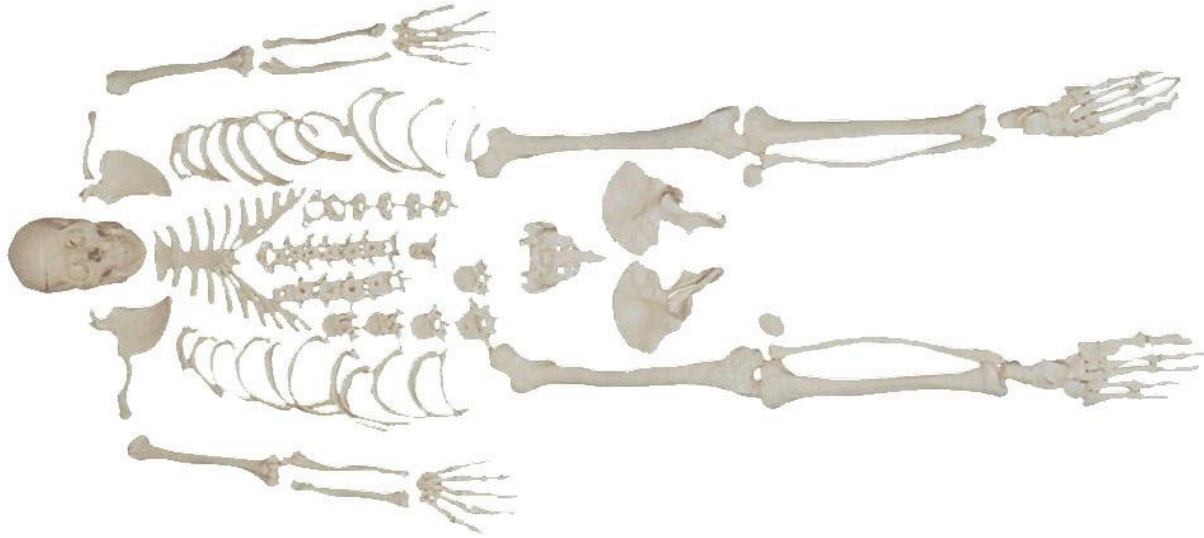


### ◀ XC-128 Life-Size Pelvis with 2pcs Lumbar Vertebrae

Consist of hip bone, sacrum with coccyx and 2 lumbar vertebrae.

Packing: 10pcs/carton, 82x44x33cm, 16kgs

## XC-100 Skeleton Series



### ⬆ XC-130 Disarticulated Skeleton with Skull

Life-size, disarticulated adult skeleton includes 3-part skull, left hand and left foot on wire.

Packing: 1pcs/carton, 63x28x20cm, 9kgs

### ➤ XC-133 Cervical Vertebral Column with Neck Artery

Consisted of occipital plate, the 7 cervical vertebrae with intervertebral discs, cervical nerves, vertebral arteries and spinal cord. On stand.

Packing: 20pcs/carton, 46x37x27cm, 9kgs



### ⬅ XC-134 Cutaway Osteoporosis

Consist of 3 medially divided lumbar vertebrae with intervertebral discs. For comparison, the upper section shows healthy bone structure, The middle section shows osteoporotic bone structure and the lower section shows advanced osteoporotic bone structure with flattened plates, deformation and decreased mass. For detailed study the vertebrae can be removed from the stand.

Packing: 32pcs/carton, 62x29x29cm, 14kgs