



### ⚡ XC-201 85CM Male Torso 19 Parts

This is a full-size male torso. Hand painted and meticulously assembled to simulate human anatomy. Dissects into 19 parts: torso, head (2 parts), brain, lung (4 parts), heart, trachea, esophagus and descending aorta, diaphragm, stomach, duodenum with pancreas and spleen, intestines, kidney, bladder (2 parts) and liver. Mounted on plastic base. Size:85CM.

Packing: 1pcs/carton, 88x39x30cm, 10kgs

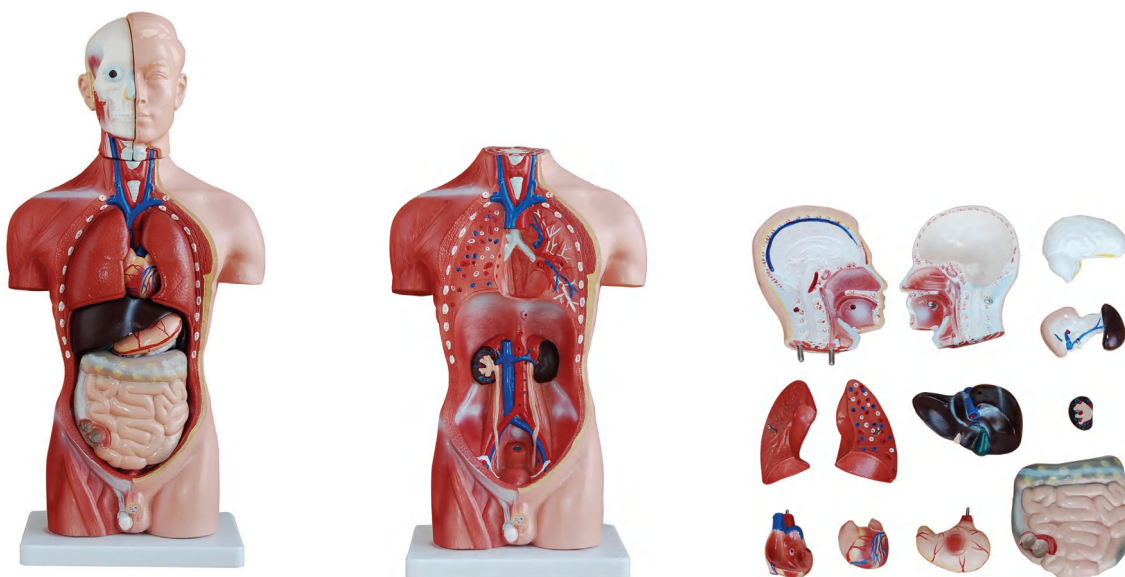


### ⚡ XC-203 26CM Torso 15 Parts

This most popular educational torso features 15 parts, including torso, brain (2 parts), cut calvarium, heart, lung (4 parts), stomach, diaphragm, liver, heart, trachea & esophagus & aorta, pancreas and spleen. Size:26CM.

Packing: 24pcs/carton, 58x45x39cm, 18kgs

## XC-200 Torso Series



### ▲ XC-202A 42CM Male Torso 13 Parts

This male torso features 13 parts, including torso, head (2 parts), brain, lung (2 parts), heart (2 parts), stomach, liver, kidney, pancreas and spleen, intestine. Made of PVC plastic. Mounted on plastic base. Size: 42CM.

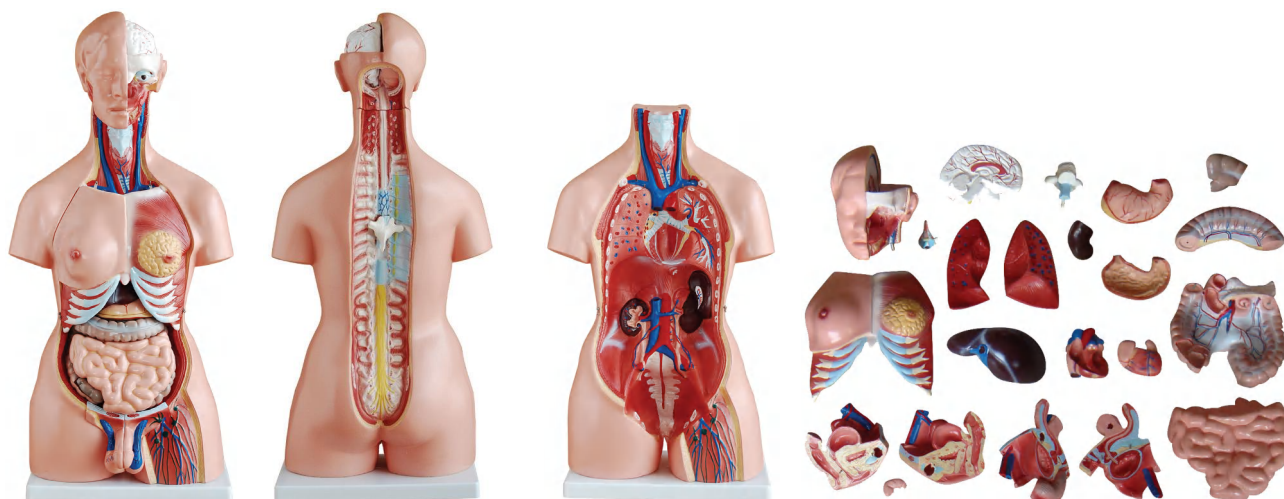
Packing: 6pcs/carton, 49x45x42cm, 11kgs



### ▲ XC-202B 42CM Female Torso 15 Parts

This female torso features 15 parts, including torso, head (2 parts), brain, lung (2 parts), heart (2 parts), stomach, liver, kidney, pancreas and spleen, intestine, female genitalia (2 parts). Made of PVC plastic. Mounted on plastic base. Size: 42CM.

Packing: 6pcs/carton, 49x45x42cm, 11kgs



### ⚠ XC-204 85CM Unisex Torso 23 Parts

This outstanding torso features an exposed spine with removable vertebra and spinal cord segments, a female breast plate and interchangeable male and female genitalia. The female organs include a fetus in the womb. Dissectible into 23 parts: torso, female breast plate, head, eyeball, brain, vertebra spinal nerves, lung (2 parts), heart (2 parts), liver, kidney, stomach (2 parts), intestines (4 parts), male genitalia (2 parts), female genitalia with fetus (3 parts). Made of PVC plastic. Mounted on a plastic base. Size: 85CM.

Packing: 1pcs/carton, 91x44x36cm, 11kgs



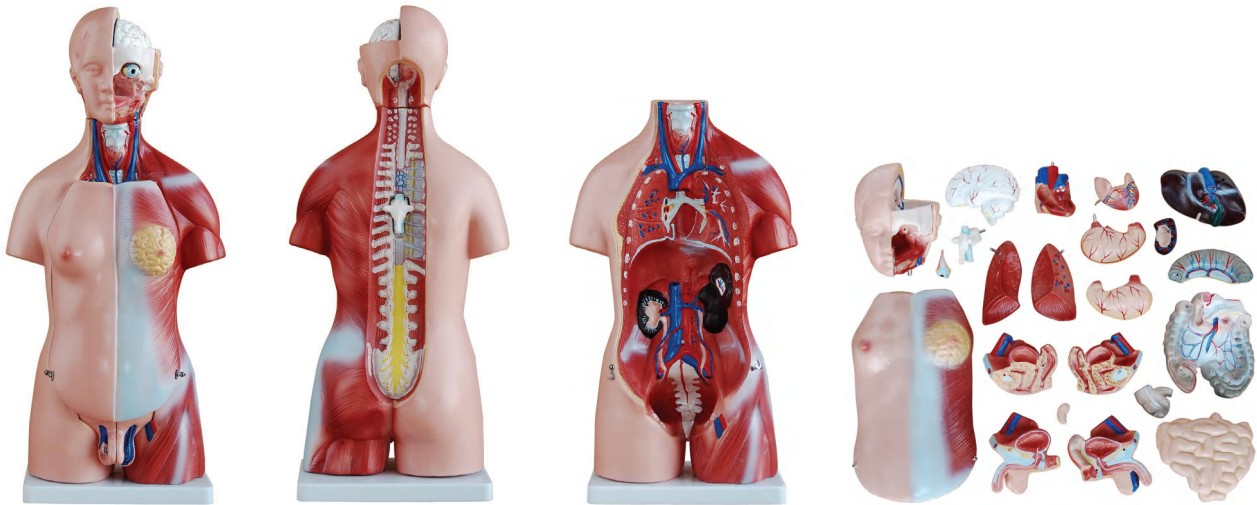
### ⚠ XC-204A 85CM Tri-sex Torso 21 Parts

This torso is based on XC-204, add non sex genitalia. Dissected into 21 parts: torso, female breast plate, head, eyeball, brain, vertebra spinal nerves, lung (2 parts), heart (2 parts), liver, kidney, stomach, intestines (2 parts), male genitalia (2 parts), female genitalia with fetus (3 parts), non sex genitalia. Made of PVC plastic. The stomach parts and intestine parts can be replaced by the ones of XC-204. Mounted on base. Size: 85CM.

Packing: 1pcs/carton, 91x44x36cm, 11kgs



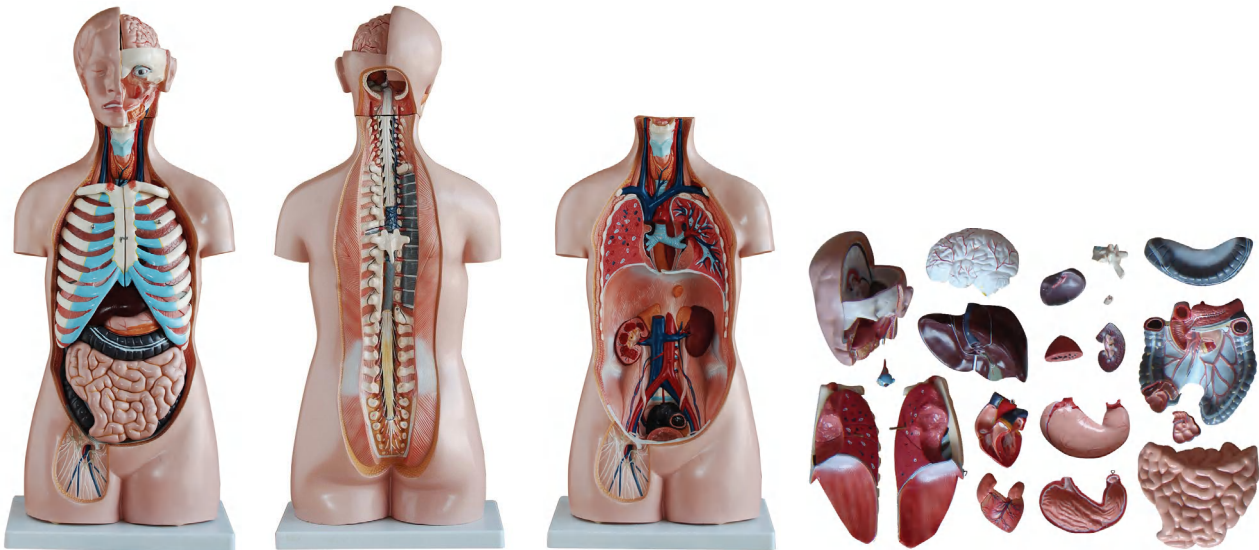
## XC-200 Torso Series



### ⬆ XC-205 45CM Unisex Torso 23 Parts

This unisex torso features the same as XC-204 but half size, offering an outstanding educational value. Dissected into 23 parts: torso, female breast plate, head, eyeball, brain, vertebra spinal nerves, lung (2 parts), heart (2 parts), liver, kidney, stomach (2 parts), intestines (4 parts), male genitalia (2 parts), female genitalia with fetus (3 parts). Made of PVC plastic. Mounted on plastic base. Size:45CM.

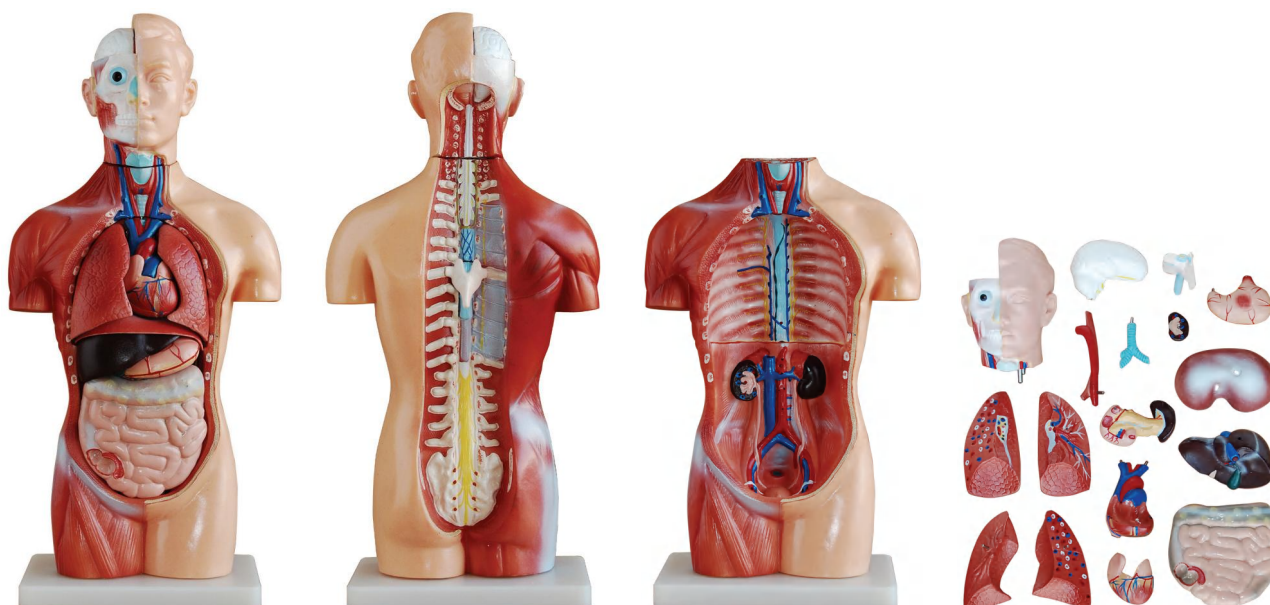
Packing: 6pcs/carton, 59x56x55cm, 18kgs



### ⬆ XC-206 85CM Sexless Torso 20 Parts

This sexless model including 20 dissectible parts:torso, head, eye, brain, lung with sternum and rib attachments (2 parts), heart (2 parts), stomach (2 parts), liver, spleen, kidney, intestine (4 parts), urinary bladder, vertebra spinal nerves (2 parts). Open back. Mounted on plastic base. Size: 85CM.

Packing: 1pcs/carton, 91x44x36cm, 10kgs



### ⚠ XC-207 42CM Sexless Torso 18 Parts

This sexless model including 18 dissectible parts:torso, head, brain, trachea, esophagus and descending aorta, diaphragm, lung (4 parts), heart (2 parts), stomach, liver, kidney, pancreas and spleen, intestine, vertebra spinal nerves. Open back. Mounted on plastic base. Size: 42CM.

Packing: 6pcs/carton, 59x56x55cm, 14kgs

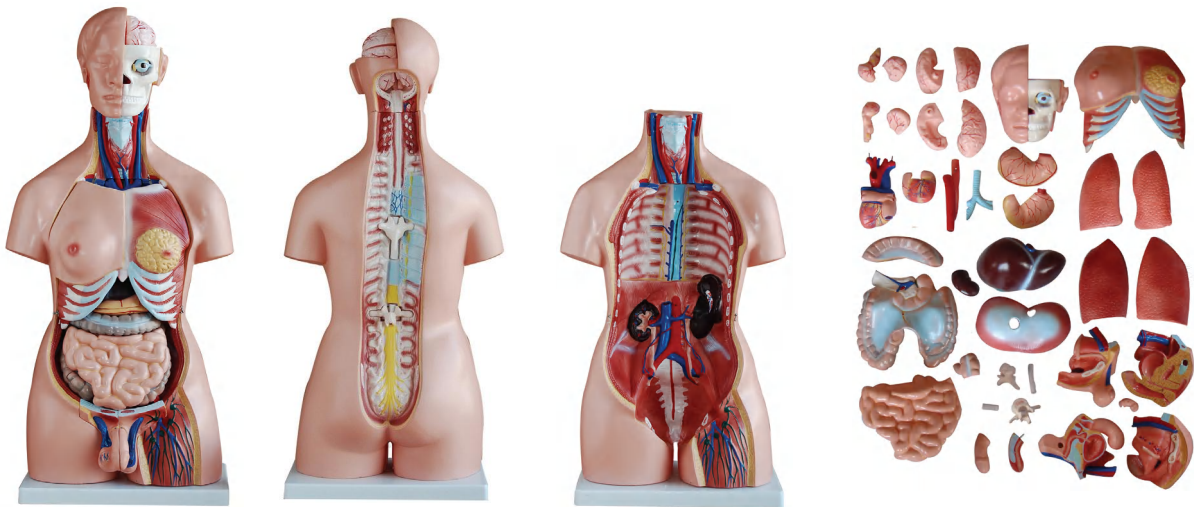


### ⚠ XC-209 55CM Unisex Torso 20 Parts

This unisex torso including 20 parts: torso, head, eyeball, brain, lung (2 parts), heart (2 parts), liver, gallbladder, kidney, stomach (2 parts), intestines (2 parts), male genitalia (2 parts), female genitalia (2 parts) and vertebra spinal nerves. Size: 55CM.

Packing: 4pcs/carton, 61x51x35cm, 14kgs

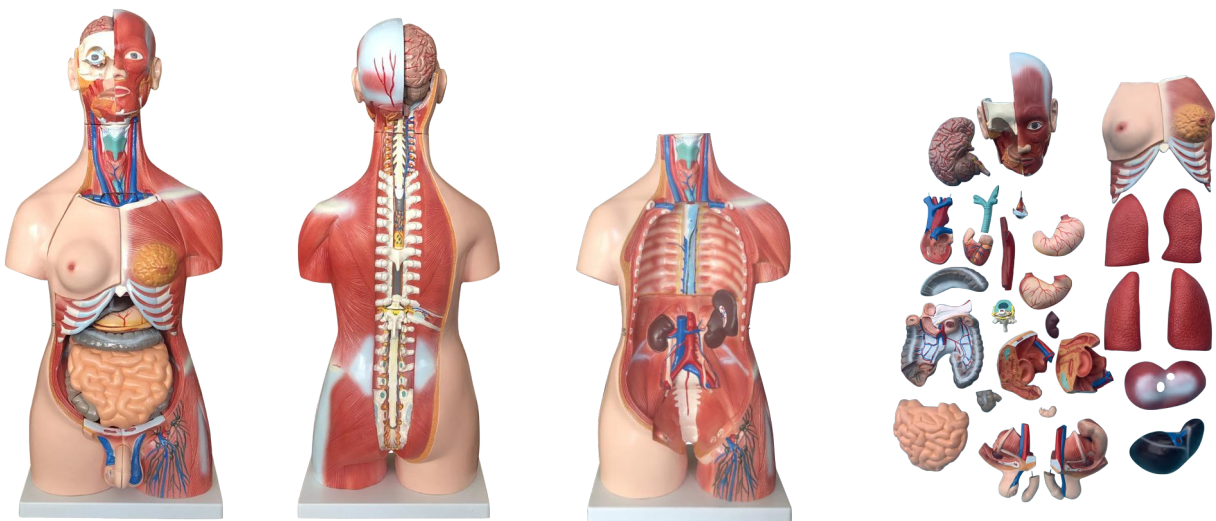
## XC-200 Torso Series



### ⚠ XC-208 85CM Unisex Torso 40 Parts

This unisex torso including 40 parts: torso, female breast plate, head, eyeball, brain (8 parts), vertebra spinal nerves (4 parts), lung (4 parts), heart (2 parts), trachea, esophagus and descending aorta, diaphragm, liver, kidney, stomach (2 parts), intestines (4 parts), male genitalia (4 parts), female genitalia with fetus (3 parts). Size: 85CM.

Packing: 1pcs/carton, 91x44x36cm, 11kgs



### ⚠ XC-210 85CM Unisex Muscle Torso 30 Parts

This unisex torso including 30 parts: torso, chest, head, eyeball, brain (1 part), spinal nerve (1 part), lung (4 parts), heart (2 parts), trachea, esophageal artery, diaphragm, liver, kidney, stomach (2 Parts), intestine (4 parts), male genitalia (4 parts), female genital with fetus (3 parts). Size: 85CM.

Packing: 1pcs/carton, 91x44x36cm, 11kgs